



League of Women Voters Eden Area

VOTER

Vol.63 #4 Political Responsibility through Informed and Active Participation April 2020

Annual Membership Meeting Set for June 6th



The League of Women Voters Eden Area plans to hold our Annual Membership Meeting on **Saturday, June 6th, at 9:30am**. We may hold the meeting just online, or in-person with an online option; the board will make the final decision at our April board meeting.

If you have not attended an online meeting before, we want you to know that we will be giving lots of support and instructions on how to participate. As of this writing, it is uncertain as to the need to meet totally online, but we are being

proactive and preparing for that need.

If we do end up offering an in-person meeting, it will be held at the Castro Valley School District, either at the board room or at the adult school. We will give you plenty of notice as to the exact location.

As mentioned above, we will definitely have an online option if we do offer the in-person meeting, since many of our members may still wish to stay at home due to the current health crisis. We will be modeling social distancing protocols and other health practices.

We encourage members to save the date and look for our next issue of the VOTER for the meeting kit, and for further instructions on where and how we will meet. Thank you for your patience.

Census Is Vital to Our Democracy



By now you should have received your U.S. Census invitation in the mail; it is a light blue color. It contains your special twelve-digit Census ID number and the website; this is the first time that the census is asking for all of us to complete it online. Please be sure to fill it out; it only takes about ten minutes. For more information on the U.S. Census, please see: <https://2020census.gov/en.html>

Don't have a computer? Don't worry; you can participate in the Census using your cell phone or by mail. As you probably know, it is essential that California gets an accurate count, so we can receive our fair portion of funds for education, highway construction, medical services, transit, water, and many other programs. The Census also helps us determine how many U.S. Congress members are allotted to our area. If you have already completed the Census, thank you! It is a key element of our democracy, which is why the League is partnering with the Census to promote it.

LWVEA Website Takes Credit Card Memberships and Donations

The League of Women Voters Website now takes credit card payments for memberships or donations: <https://my.lwv.org/california/eden-area>.

When you go to our site and click on Join in the left-hand menu of options, you can join or renew your membership online using a credit card. This is a simple and easy way to renew; look for the blue Membership or Additional Family Member button near the top of the Join page.

Student memberships are free, so if a student is joining or renewing, just fill out and email in the form to pikly@aol.com or cdarcey@pacbell.net.

Interesting in donating to our league? Click on Donate on the left-hand menu, and you will go to our Donation page. Scroll down until you see the blue Donation button (about halfway down the page). Once you click on it, you can enter any amount in the donation area and charge it to your credit card.

Volunteers Needed to Distribute Voter Registration Forms

LWVEA Members Volunteer Opportunity: Here is a way LWVEA members can help more people register to vote without actually participating at one of our public voter registration events. How about helping us by delivering voter registration forms to post offices and libraries and schools so citizens can pick up a form to register when the mood hits them? These sites already welcome our service. We'll supply you with plenty of VR forms and a list of 8 to 12 sites which we ask you to visit every six to eight weeks, or as needed, to maintain their supply. Sites are available in Hayward, San Lorenzo, San Leandro and Castro Valley. Just email Richard Maurer at prmaurer3130@att.net to get started.

President's Report

Looking for something to do at home during this unusual time sheltering in place? Have your own "Suffragist" Film Festival in honor of the centennial of the 19th Amendment and the League of Women Voters! You can seek out the DVDs on Amazon or see if your library has a downloadable version (many do). Some of the older films may be on demand from Turner Classic Movies (tcm.com).



Suffragette (2015)

In this British-made drama, women of different classes fight for the right to vote in 1912 London. Rated PG-13, the film is not for the weak of heart – there are some instances of a woman abused by her husband, as well as violence against women

protesting. Meryl Streep has a cameo as Emmeline Pankhurst, but her scene and speech is the high point of the film.

The story focuses on one working class woman Maud, played by Carrie Mulligan, but some upper class women are also shown, since this movement had the unusual distinction of including women from the entire class system of England.



Iron Jawed Angels (2004)

Although this was a made-for-TV movie and not a theatrical feature film, this is considered the best film about U.S. women campaigning for the vote. Hilary Swank stars as Alice Paul, the real-life suffragist who organized

protests. Other notable actresses playing real people include Margo Martindale as Harriot Blatch, and Angelica Huston as Carrie Chapman Catt.

A main component of the story involves the protests and arrests by those determined to obtain the right to vote; many of these were upper class women, alongside working women. The film's dramatic, realistic depiction of

beatings and force-feeding in prison are shocking but important in showing what really happened.



The Shocking Miss Pilgrim (1947)

Starring Betty Grable, this celebrates working women in the late 1800's. Grable plays a young woman hired by a shipping company as a stenographer, due to her adept use of a typewriter. She fights

sexism at work and becomes involved in the suffrage movement, which also earns her ridicule from her coworkers. This is not one of Grable's best romantic musical comedies but it is fun.



Rails into Laramie (1954)

A military officer is sent to Laramie to facilitate the building of the railroad in this Western. What is unique is that part of the story involves a trial with an all-female jury; in 1869 Wyoming became the first state to grant women

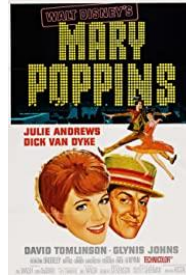
the right to vote and serve on juries. Although this isn't specifically about women's suffrage, the plot does talk about it and the female jury. Starring John Payne and Dan Duryea.



Adventure in Baltimore (1949)

Set in 1905, Shirley Temple stars as a young adult interested in equality for women and the suffrage movement. Her father is a minister, played by Robert Young, and the two have

great chemistry. In 1936, they starred together in "Stowaway," when Temple was 8 years old. In this film, her love interest is John Agar, who Temple had married shortly before filming. It was great to see that many women in the suffrage movement were seeking equality in other areas as well, such as education.



Mary Poppins (1964)

If you haven't seen this since you were a kid, you may have forgotten that Mrs. Banks (Glynis Johns) was a suffragette, protesting for the right to vote while the children were at home with Mary Poppins. She even sings a song "Sister Suffragette" early in the film! This is a fun one to introduce children to the concept that women had to fight to get the vote.

Penny Peck, LWVEA President

Demand Action from Congress to Protect 2020 Election

As the House and Senate work to address the COVID-19 public health crisis it is CRITICAL that legislators include adequate funding provisions to safeguard the right to vote in the upcoming November election.

[Contact Congress today and ask them to ensure funding to safeguard our elections is included in the next stimulus bill.](#)

To date, Congress has passed two large stimulus packages that have been signed by the President and is currently negotiating a third package. The League believes that this third package needs to include funding for provisions to ensure Americans are given the right to vote safely in November. That's why we joined our allies at the Leadership Conference on Civil and Human Rights in sending a [letter to Congress](#), signed by over 150 organizations, calling for at least \$2 billion in funding to be allocated toward essential measures including:

- voter education (informing the public of new practices and immediately quashing disinformation as it arises).
- an extended early in-person voting period (allowing citizens to vote over an

- expanded period rather than in a cluster on Election Day
- expanded voter registration options (including online voter registration and same-day voter registration)
- no-excuse absentee voting-by-mail (including a number of options through which to request and return ballots)
- prohibition of polling place adjustments that disproportionately impact vulnerable populations such as people of color, limited-English proficient citizens, people with disabilities, and students.

[We are at a critical point where we must tell our Representatives and Senators that our elections need to be safeguarded during this pandemic.](#)

Contact your members of Congress and demand they support a minimum of \$2 billion directed to safely expand voting options in the upcoming stimulus package. You can email them using our action tool or call them at (202) 224-5721.

Please act now to ensure Americans have a safe and secure way to vote in November.

The Susan B. Anthony Amendment

Submitted by Rene' Besold

In every man's life
is a vitally important woman,
A woman without whom
That man would not exist.
A woman who went through
Nine months
Pain and worry and discomfort,
In preparation
For hours of trauma,
Passing that man
Through the smallest of portals
To have a chance at life.

Yet for thousands of years

Men ruled the world.
Physically stronger,
They could dominate
Through strength,
Violence,
And women,
Even those who gave men life,
Had little power,
Little to say.

But then came America—
A democracy—
No longer ruled
By divine right of kings.
Democracy—where rulers are elected,
By votes,
By the acclamation
Of ALL fellow Americans.
And thus, with majority approval.
Anyone could rule.

Yes, anyone could rule—
Well, uh, er, that is,
Except women.

The Declaration of Independence states
“All Men are Created EQUAL!”
Is “MEN” a generic term,
Encompassing the whole human race?

Or is “MEN” a sign
Of the simple truth
That even in democracy,
MEN want to be charge.

August 18, 1919—
A famous day in American history!
Because on that day,
A Tennessee legislator—
Harry T. Burn—
Cast a vote.
His vote broke a 48 to 48 tie!
His vote meant that Tennessee—
Unlike seven other Southern states—
Ratified the Susan B. Anthony Amendment.
The 19th amendment to the U.S. Constitution,
The amendment that gave --
Because of Tennessee's support--
Women
The right to vote!

And Harry Burn
Cast that vote
Because of advice
From his mother.

Bruce Roberts, Hayward Poet Laureate, 2020

"I knew that a mother's advice is always safest for a boy to follow and my mother wanted me to vote for ratification," he said. "I appreciated the fact that an opportunity such as seldom comes to a mortal man to free 17million women from political slavery was mine."

Harry T. Burn, quoted by the National Constitution Center

Bay Area Monitor Notes

Interested in updates from the League of Women Voters Bay Area? Check out their Bay Area Monitor Notes, compiled by transportation writer Cecily O'Connor. You can sign up to have Monitor Notes emailed to you: <https://bayareamonitor.org/>.

CLIMATE CHANGE and GLOBAL WARMING

by Richard Maurer, LWVEA

Part 4

As we introduced last time, one of the most dramatic and worldwide consequences of global warming is sea level rise (SLR). The nominal surface of the world ocean is rising due to more water being added to the ocean due to heating of the atmosphere and ocean, which is melting ice on land. Scientists now know that some pretty dramatic sea level rise is unavoidable. Unavoidable because man ignored rising global warming for so long that much heat has entered the world atmosphere and ocean, and so the potential for significant SLR is now "cooked into" these fluids. Consequently, SLR has started and will persist into the coming centuries. No one can predict

precisely at this time just how high the sea level will eventually rise. This depends partly on how aggressive man reduces the cause of global warming; in other words, primarily how fast and how much we stop using fossil fuels.

Just how high the sea level will eventually rise also depends on the impact of "feed-back loops" and "tipping points" which you may have heard about. These are not as fully understood by scientists as is the CO₂ – temperature – SLR relationship. This relationship was presented graphically in the curves included at the end of Part 3. The most important thing about these curves is the remarkable agreement between the CO₂, temperature and sea level graphs. They rise and fall together, and have been doing this for hundreds of thousands of years due to natural phenomenon which we won't go into here. But take note of the far right end of the curves, which reflects present day conditions influenced by man-made CO₂ additions to the atmosphere. As we stated earlier, the atmospheric CO₂ concentration is currently about 415 ppm, which is much higher than it has ever been since man has been on earth.

Take note of the global temperature rise at the far right end of the graph. Note the uptick. This is the nearly one degree Celsius (1.8 degree Fahrenheit) temperature rise since man started burning a lot of fossil fuel since the industrial revolution. Climate scientists judge that the earth is currently at the end of the last ice age cycle and is about to start sliding down-temperature into the next ice age cycle, except that global warming is now acting to delay this slide. How much global warming will delay, or totally prevent this slide, is unknown because cooling into an ice age is a roughly hundred-thousand year slide, and scientists don't have enough present-day data yet. Come back in a few thousand years and we'll see how we're doing. For the time being, it looks like the world climate is warming rapidly by historical standards due to man's reliance on fossil fuels for energy generation.

Now take note of the sea level graph. Note that the world sea level has naturally varied over a

400 foot elevation range depending on earth's status in an ice age cycle. This has nothing to do with anything man is doing. The last ice age ended about 12,000 years ago, and then the world's mountain glaciers and continental ice sheets extensively started to melt and return their water to the ocean, so sea level rose again to near its current level. Over the period of man's recorded history, it was assumed that the level of the ocean was essentially stable, with most of the world's fresh water frozen on land near the poles. In fact, the ocean level is currently near historical high level. With global warming steadily raising the temperature of the atmosphere and ocean, much of this frozen water on land will eventually melt and flow into the ocean and, in fact, this has started to occur. It's becoming increasingly clear that how much will melt is up to us.

That's a long way of saying that we're going to get our feet wet and, in fact, many communities around the world are already experiencing this. Just Google Miami or New York or London or Shanghai "flooding" to see what this looks like. Some island nations and many coastal cities located just above sea level, and subject to high tides and storm surges, are starting to see threatening floods from SLR.

Three quarters of the world's nearly 200 nations have a seacoast and, consequently will be impacted directly by SLR. Half of the U.S. states have a seacoast and will be impacted directly by SLR. Many of the world's and U.S.'s largest cities are on seacoasts. The major coastal cities were built based on the assumption that the sea level was pretty stable, so their harbors and airports and sewage treatment plants and power stations and highways are not much above sea level and, therefore, are vulnerable to SLR flooding. And that doesn't mean that the other nearly 50 nations and 25 U.S. states without a seacoast will be safe from impact. The severe economic and societal challenges of global warming and SLR will affect the economies of all countries and states. Sea level rise, therefore, will become one of the most visible, extensive and expensive consequences of global warming.

So, let's summarize the story again: Unrestrained burning of fossil fuels releases CO₂ into the atmosphere. Rising levels of this "greenhouse gas" causes the atmosphere to warm, which warms the upper layers of the ocean. The warming atmosphere and ocean causes the polar ice sheets and mountain glaciers to start to melt. The melting ice flows into the ocean, causing sea level rise (SLR). To date, a combination of thermal expansion of the warming ocean, and the volume of fresh water that has been added to the ocean by land ice melting, has already caused a SLR of most of one foot over the last 150 years. How much more could the ocean rise if this trend continues unabated? In other words, how much water is frozen near the poles which could potentially enter the ocean?

It is hard to imagine how much water is frozen into ice sheets on Greenland and at the South Pole. The Eastern Antarctic Ice Sheet, for instance, is over two miles thick, maybe three miles in places. Scientists calculate that there is enough water in these ice sheets to raise the world ocean level by over two hundred feet if all this ice melted! For the last several years, scientists have observed that the ice sheets in Greenland and Antarctica are undergoing seasonal melting at an increasing rate. We all enjoy seeing dramatic images of huge chunks of ice calving off of the edge of glaciers into the ocean, with booming sounds of crack and splash. If this calving of ice just made for pretty pictures it would be one thing. But now we know the deeper significance of this ice calving. Scientists are most concerned about the accelerating melting of the Greenland ice sheet. Current estimates put its melting rate at over 250 billion tons of ice per year. It is estimated that it could take more than a century to melt this entire mass of ice, but if it did, it could by itself raise the world-wide sea level by over 24 feet! Contemplate that next time you drive over the San Mateo–Hayward Bridge.

Scientists are also concerned about the Antarctic ice sheet because current estimates put this ice sheet melting rate at over 200 billion tons of ice per year, less than that from the Greenland ice sheet although it is 8 times the

size of the Greenland ice sheet. This is why melting from the Greenland ice sheet is considered the “canary in the coal mine” indicator of global warming. The Antarctic ice sheet extends by glaciers downslope and into the ocean where they are tenuously held by floating ice shelves. It has recently been reported that the seawater under these shelves is warming and causing melting of these anchoring ice masses. (Google the Thwaites Glacier or the Pine Island Glacier for more info.) If these anchoring glaciers give-way, all bets are off on the eventual rate of SLR. Luckily, scientists estimate that even with global warming, the total volume of the ice sheets could not melt in our lifetime. But how much SLR could occur in our lifetime?

That’s a hard question to answer because of several factors: How aggressively will man stop adding CO₂ and other “greenhouse gases” to the atmosphere? How fast will the melting glaciers and ice sheets continue to melt? How unstable are the tidewater glaciers at Antarctica, which are holding the ice sheet glaciers from moving toward the sea? How much will the melting North Pole sea ice add to global warming due to the “feed-back loop” effect? How close is the whole heat transfer-ice melting dynamic close to a “tipping point”, at which time we will lose our ability to moderate the most extreme extent of SLR. There are many other unknowns. In other words, we don’t know for sure at what point we could lose this game of risk we are playing with the world’s climate. Caution is advised. Specifically, reduced use of fossil fuels is advised because this is the main driver of global warming.

Many detailed studies have been made and are continuing to be updated to determine how much SLR could occur this century, and how government agencies should respond. In our San Francisco Bay area, major studies have been made by the City of San Francisco and by the Bay Conservation and Development Commission (BCDC), among others. Next time, we will review these studies and what they mean for our Eden Area on the eastern shore of the Bay.



League of Women Voters of Eden Area

P. O. Box 2234 – Castro Valley, CA 94546 • 510/826-6674
Representing cities of Hayward and San Leandro and
unincorporated areas of Ashland, Castro Valley,
Cherryland, Fairview, and San Lorenzo

Just cut out and mail this coupon with your check to:

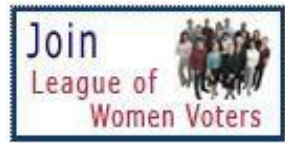
League of Women Voters of Eden Area Treasurer
P.O. Box 2234, Castro Valley, CA 94546

Name _____

Address _____

Phone _____ Email _____

Dues: Regular \$70,
2nd member same household
\$30, Student free



The League of Women Voters, a nonpartisan political organization, encourages the informed and active participation of the public in government and influences public policy through education and advocacy.

For our Calendar of upcoming events, go to:

<https://my.lwv.org/california/eden-area>

BOARD OF DIRECTORS

Penny Peck, President
Pikly@aol.com

Carolyn Darcey, Membership
cdarcey@pacbell.net

Sue Kleebauer, Pros & Cons
sklee2@pacbell.net

Marian Handa, Secretary
marianhanda@comcast.net

Rita Duncan, Membership
freemyheart@yahoo.com

Richard Maurer, Registration
prmaurer3130@att.net

Henry Hansen, Treasurer
henry_hansen@comcast.net

Lynda Foster, Voter Service
lfentonfoster@gmail.com

Jewell Spalding, Positions
jewellspalding@mac.com

Jo Loss, President-Elect
jolosscev@gmail.com

Janice Friesen, Voter Service
jfriesen5490@yahoo.com

Aiwa Zelinsky, Media
aiyz@comcast.net